

FIN WHALE (*Balaenoptera physalus*): Northeast Pacific Stock

STOCK DEFINITION AND GEOGRAPHIC RANGE

Within the U.S. waters in the Pacific, fin whales are found seasonally off the coast of North America and Hawaii and in the Bering Sea during the summer (Fig. 40). Recent information on seasonal fin whale distribution has been gleaned from the reception of fin whale calls by bottom-mounted, offshore hydrophone arrays along the U.S. Pacific coast, in the central North Pacific, and in the western Aleutian Islands (Moore et al. 1998, Watkins et al. 2000). Moore et al. (1998) and Watkins et al. (2000) both documented high levels of fin whale call rates along the U.S. Pacific coast beginning in August/September and lasting through February, suggesting that this may be an important feeding area during the winter. While peaks in call rates occurred during fall and winter in the central North

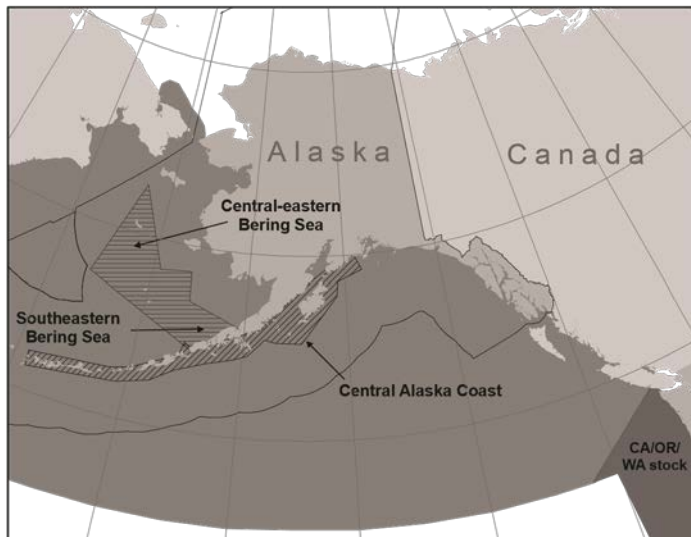


Figure 40. Approximate distribution of fin whales in the eastern North Pacific (shaded area). Enclosed area indicates general location of the pollock surveys from which regional estimates of the fin whale population was made.

Pacific and the Aleutian Islands, there were also a few calls recorded during the summer months. While seasonal differences in recorded call rates are generally consistent

with the results of aerial surveys which have documented seasonal whale distribution, it is not known whether these differences in call rates reflect true seasonal differences in whale distribution, differences in calling rates, or differences in oceanographic properties (Moore et al. 1998). Fin whale calls have also been well-documented off of Hawaii during the winter (McDonald and Fox 1999), although aerial and shipboard surveys have found relatively few animals in Hawaiian waters (Mobley et al. 1996).

Recent surveys in the central-eastern and southeastern Bering Sea in 1999 and 2000 and in the western Gulf of Alaska and the eastern and central Aleutian Islands from 2001 to 2003 resulted in new information about the distribution and relative abundance of fin whales in these areas (Moore et al. 2000, 2002; Zerbini et al., in press). Fin whale abundance estimates were nearly five times higher in the central-eastern Bering Sea than in the southeastern Bering Sea (Moore et al. 2002), and most sightings in the central-eastern Bering Sea occurred in a zone of particularly high productivity along the shelf break (Moore et al. 2000).

The following information was considered in classifying stock structure based on the Dizon et al. (1992) phylogeographic approach: 1) Distributional data: geographic distribution continuous in winter, possibly isolated in summer; 2) Population response data: unknown; 3) Phenotypic data: unknown; and 4) Genotypic data: unknown. Based on this limited information, the International Whaling Commission considers fin whales in the North Pacific to all belong to the same stock (Mizroch et al. 1984), although those authors cited additional evidence that supported the establishment of subpopulations in the North Pacific. Further, Fujino (1960) described an eastern and a western group, which are isolated though may intermingle around the Aleutian Islands. Discovery Mark recoveries reported by Rice (1974) indicate that animals wintering off the coast of southern California range from central California to the Gulf of Alaska during the summer months. Fin whales along the Pacific coast of North America have been reported during the summer months from the Bering Sea to as far south as southern Baja California (Leatherwood et al. 1982). As a result, stock structure of fin whales remains uncertain.

Mizroch et al. (in review) provided a comprehensive summary of whaling catch data, Discovery Mark recoveries, and opportunistic sightings data and found evidence of at least two migratory stocks, similar to Fujino's (1960) eastern and western groups. However, it appears likely that the stocks mingle in the Bering Sea in July and August, rather than in the Aleutian Islands as Fujino (1960) concluded. Mizroch et al. (in review) also found strong evidence of at

least one additional non-migratory resident group of fin whales in the Sea of Japan/Sanriku-Hokkaido area, in addition to known resident groups in the Gulf of California and the East China Sea.

For management purposes, however, and until further information becomes available to resolve the uncertainties described above, three stocks of fin whales are currently recognized in U.S. waters: 1) Alaska (Northeast Pacific), 2) California/Washington/Oregon, and 3) Hawaii. The California/Oregon/Washington and Hawaii fin whale stocks are reported separately in the Stock Assessment Reports for the Pacific Region.

POPULATION SIZE

Reliable estimates of current and historical abundance for the entire Northeast Pacific fin whale stock are currently not available. Ranges of population estimates for the entire North Pacific prior to exploitation and in the early 1970s are 42,000 to 45,000 and 14,620 to 18,630, respectively (Ohsumi and Wada 1974), representing 32% to 44% of the precommercial whaling population size (Braham 1984). These estimates were based on population modeling, which incorporated catch and observation data. These estimates also include whales from the California/Oregon/Washington stock for which a separate abundance estimate is currently available.

Two recent studies provide some information on presence of fin whales, although they do not provide estimates of population size. A survey conducted in August of 1994 covering 2,050 nautical miles of trackline south of the Aleutian Islands encountered only four fin whale groups (Forney and Brownell 1996). However, this survey did not include all of the waters off Alaska where fin whale sightings have been reported, thus, no population estimate can be made. Passive acoustics were used off the island of Oahu, Hawaii, to document a minimum density estimate of 0.081 fin whales/1,000km² from peak call rates during the winter (McDonald and Fox 1999). This density estimate is well below the population density of 1.1 animals/1,000 km² documented off the coast of California (Barlow 1995, Forney et al. 1995) but does indicate that Hawaii is used seasonally by fin whales. A visual survey for cetaceans was conducted in the central-eastern Bering Sea in July-August 1999 and in the southeastern Bering Sea in June-July 2000 in cooperation with research on commercial fisheries (Moore et al. 2002). The survey included 1,761 km and 2,194 km of effort in 1999 and 2000, respectively. Aggregations of fin whales were often sighted in 1999 in areas where the ship's echosounder identified large aggregations of zooplankton, euphausiids, or fish (Moore et al. 2000). One aggregation of fin whales which occurred during an offeffort period involved greater than 100 animals and occurred in an area of dense fish echosign. Results of the surveys in 1999 and 2000 in the central-eastern Bering Sea and southeastern Bering Sea provided provisional estimates of 3,368 (CV = 0.29) and 683 (CV = 0.32), respectively (Moore et al. 2002). These estimates are considered provisional because they have not been corrected for animals missed on the trackline, animals submerged when the ship passed, and responsive movement. However, the provisional estimate for fin whales in each area is expected to be robust as previous studies have shown that only small correction factors are needed for this species. The Moore et al. (2002) estimate for 1999 is different than that of Moore et al. (2000) because it covers the southeastern Bering Sea as well as the central-eastern Bering Sea. Additionally, the region covered by Moore et al. (2000) did not have consistent effort and thus could be inaccurate. This estimate cannot be used as an estimate of the entire Northeast Pacific stock of fin whales because it is based on a survey in only part of the stock's range. Dedicated line transect cruises were conducted in coastal waters of western Alaska and the eastern and central Aleutian Islands in July-August 2001-2003 (Zerbini et al., in press). Over 9,053 km of tracklines were surveyed in coastal waters (as far as 85 km offshore) between the Kenai Peninsula (150°W) and Amchitka Pass (178°W). Fin whale sightings (n = 276) were observed from east of Kodiak Island to Samalga Pass, with high aggregations recorded near the Semidi Islands. Zerbini et al. (in press) estimated that 1,652 (95% CI = 1,142-2,389) whales occurred in the area.

Minimum Population Estimate

Since 1999, information on abundance of fin whales in Alaskan waters has improved considerably. Although the full range of the northeast Pacific stock of fin whales in Alaskan waters has not been surveyed, a rough estimate of the size of the population west of the Kenai Peninsula could include the sums of the estimates from Moore et al. (2002) and Zerbini et al. (in press). Using this approach, an initial estimate of the fin whale population west of the Kenai Peninsula would be 5,703. This is clearly a minimum estimate, as no estimate is available for U.S. waters to the east of the Kenai Peninsula.

Current Population Trend

Zerbini et al. (in press) estimated trends in abundance of fin whales in coastal waters south of the Alaska

Peninsula (Kodiak and Shumagin Islands). An annual increase of 4.8% (95% CI = 4.1-5.4%) was observed from 1987-2003. This estimate refers to whales observed in only a fraction of the range of the northeast Pacific stock.

CURRENT AND MAXIMUM NET PRODUCTIVITY RATES

A reliable estimate of the maximum net productivity rate is currently unavailable for the Northeast Pacific fin whale stock. Hence, until additional data become available, it is recommended that the cetacean maximum net productivity rate (R_{MAX}) of 4% be employed for this stock (Wade and Angliss 1997).

POTENTIAL BIOLOGICAL REMOVAL

Under the 1994 reauthorized Marine Mammal Protection Act (MMPA), the potential biological removal (PBR) is defined as the product of the minimum population estimate, one-half the maximum theoretical net productivity rate, and a recovery factor: $PBR = N_{MIN} \times 0.5R_{MAX} \times F_R$. The recovery factor (F_R) for this stock is 0.1, the recommended value for cetacean stocks which are listed as endangered (Wade and Angliss 1997). Thus, the PBR level for this stock is 11.4 (5,703 \times 0.02 \times 0.1).

ANNUAL HUMAN-CAUSED MORTALITY AND SERIOUS INJURY

Fisheries Information

Prior to 1999, there were no observed or reported mortalities of fin whales incidental to commercial fishing operations within the range of this stock. However, in 1999, one fin whale was killed incidental to the Gulf of Alaska pollock trawl fishery. Because there have been no serious injuries or mortalities in this fishery for the period 2000-2004 (Perez 2006), the mean annual mortality and serious injury rate for fin whales in this fishery is 0. Although there have been a few strandings of fin whales recorded in recent years (2 and 1 in 1998 and 1999, respectively; NMFS unpublished data), none of these have been noted as having evidence of fishery interactions. The total estimated mortality and serious injury incurred by this stock as a result of interactions with commercial fisheries is 0.

Subsistence/Native Harvest Information

Subsistence hunters in Alaska and Russia have not been reported to take fin whales from this stock.

Other Mortality

Between 1925 and 1975, 47,645 fin whales were reported killed throughout the North Pacific (International Whaling Commission, BIWS catch data, February 2003 version, unpublished), although newly revealed information about illegal Soviet catches indicates that the Soviets over-reported catches of about 1,200 fin whales, presumably to hide catches of other protected species (Doroshenko 2000). In 2000, a fin whale was struck by a vessel in Uyak Bay. Assuming this was the only ship strike which occurred during the 5-year period from 1997 to 2001, the average number of ship strikes per year is 0.2. There are no other reports of direct human-related injuries or mortalities to fin whales in Alaska waters included in the Alaska Region stranding database for 1998-2003. Thus, the total estimated mortality and serious injury incurred by this stock is 0.2.

STATUS OF STOCK

The fin whale is listed as “endangered” under the Endangered Species Act of 1973, and therefore designated as “depleted” under the MMPA. As a result, the Northeast Pacific stock is classified as a strategic stock. While reliable estimates of the minimum population size, population trends, and PBR are available for a portion of this stock, much of the North Pacific range has not been surveyed. Therefore the status of the stock relative to its Optimum Sustainable Population size is currently not available. The estimated annual rate of mortality and serious injury incidental to U. S. commercial fisheries for this stock (0) does not exceed the PBR level for the stock (11.4). Thus, fishery-related mortality levels can be determined to have met a zero mortality and serious injury rate. There are no known habitat issues that are of particular concern for this stock.

CITATIONS

- Barlow, J. 1995. The abundance of cetaceans in California waters. Part 1: Ship surveys in summer and fall of 1991. *Fish. Bull.*, U.S. 93:1-14.
- Braham, H. 1984. The status of endangered whales: an overview. *Mar. Fish. Rev.* 46(4):2-6.

- Dizon, A. E., C. Lockyer, W. F. Perrin, D. P. DeMaster, and J. Sisson. 1992. Rethinking the stock concept: a phylogeographic approach. *Conserv. Biol.* 6:24-36.
- Doroshenko, N. V. 2000. Soviet whaling for blue, gray, bowhead and right whales in the North Pacific Ocean, 1961-1979. *In* Soviet whaling data (1949-1979). Eds: Yablokov, A. V. and Zemsky, V. A. Center for Russian Environmental Policy, Marine Mammal Council, Moscow, 96-103.
- Forney, K. A., and R. L. Brownell. 1996. Preliminary report of the 1994 Aleutian Island marine mammal survey. Unpubl. doc. submitted to *Int. Whal. Comm. (SC/48/O 11)*. 15 pp.
- Forney, K. A., J. Barlow, and J. V. Carretta. 1995. The abundance of cetaceans in California waters. Part II: Aerial surveys in winter and spring of 1991 and 1992. *Fish. Bull., U.S.* 93:15-26.
- Fujino, K. 1960. Monogenetic and marking approaches to identifying sub-populations of the North Pacific whales. *Sci. Rep. Whales Res. Inst., Tokyo* 15:84-142.
- Leatherwood, S., R. R. Reeves, W. F. Perrin, and W. E. Evans. 1982. Whales, dolphins, and porpoises of the eastern North Pacific and adjacent Arctic waters: a guide to their identification. U.S. Dep. Commer., NOAA Tech. Rep. NMFS Circular 444, 245 pp.
- Mizroch, S. A., D. W. Rice, and J. M. Breiwick. 1984. The fin whale, *Balaenoptera physalus*. *Mar. Fish. Rev.* 46(4):20-24.
- Mizroch, S. A., D. Rice, D. Zwiefelhofer, J. Waite, and W. Perryman. In review. Distribution and movements of fin whales in the North Pacific Ocean. *Mammal Review*.
- McDonald, M. A., and C. G. Fox. 1999. Passive acoustic methods applied to fin whale population density estimation. *J. Acoust. Soc. Am.* 105(5):2643-2651.
- Mobley, Jr., J. R., M. Smultea, T. Norris, and D. Weller. 1996. Fin whale sighting north of Kaua'i, Hawai'i. *Pacific Science.* 50(2):230-233.
- Moore, S. E., K. M. Stafford, M. E. Dahlheim, C. G. Fox, H. W. Braham, J. J. Polovina, and D. E. Bain. 1998. Seasonal variation in reception of fin whale calls at five geographic areas in the North Pacific. *Mar. Mamm. Sci.* 14(3):617-627.
- Moore, S. E., J. M. Waite, L. L. Mazzuca, and R. C. Hobbs. 2000. Provisional estimates of mysticete whale abundance on the central Bering Sea shelf. *J. Cetacean Res. Manage.* 2(3):227-234.
- Moore, S. E., J. M. Waite, N. A. Friday and T. Honkalehto. 2002. Distribution and comparative estimates of cetacean abundance on the central and south-eastern Bering Sea shelf with observations on bathymetric and prey associations. *Progr. Oceanogr.* 55(1-2):249-262.
- Ohsumi, S., and S. Wada. 1974. Status of whale stocks in the North Pacific. 1972. *Rep. Int. Whal. Comm.* 24:114126.
- Perez, M. A. 2006. Analysis of marine mammal bycatch data from the trawl, longline, and pot groundfish fisheries of Alaska, 1998-2004, defined by geographic area, gear type, and target groundfish catch species. U.S. Dep. Commer., NOAA Tech. Memo. NMFS-AFSC-167.
- Rice, D. W. 1974. Whales and whale research in the eastern North Pacific. Pp. 170-195 *In* W. E. Schevill (ed.), *The whale problem: A status report*. Harvard Press, Cambridge, MA.
- Wade, P. R., and R. Angliss. 1997. Guidelines for assessing marine mammal stocks: report of the GAMMS workshop April 3-5, 1996, Seattle, Washington. U.S. Dep. Commer., NOAA Tech. Memo. NMFS-OPR12, 93 pp.
- Watkins, W. A., M. A. Daher, G. M. Reppucci, J. E. George, D. L. Martin, N. A. DiMarzio, and D. P. Gannon. 2000. Seasonality and distribution of whale calls in the North Pacific. *Oceanography.* 13(1):62-67.
- Zerbini, A. N., J. M. Waite, J. L. Laake and P. R. Wade. In press. Abundance, trends and distribution of baleen whales in western Alaska and the central Aleutian Islands. *Deep Sea Res. Part I*.