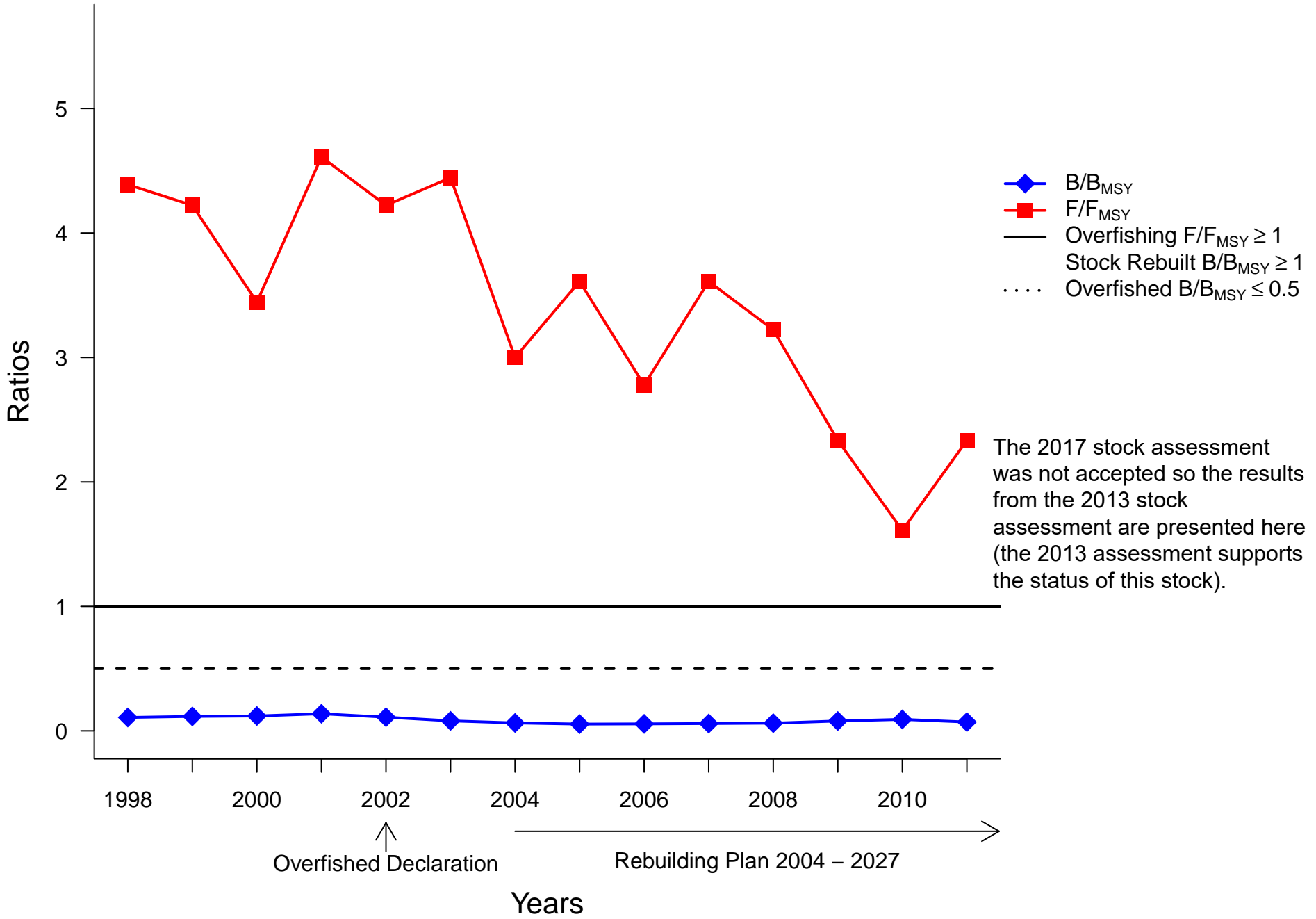
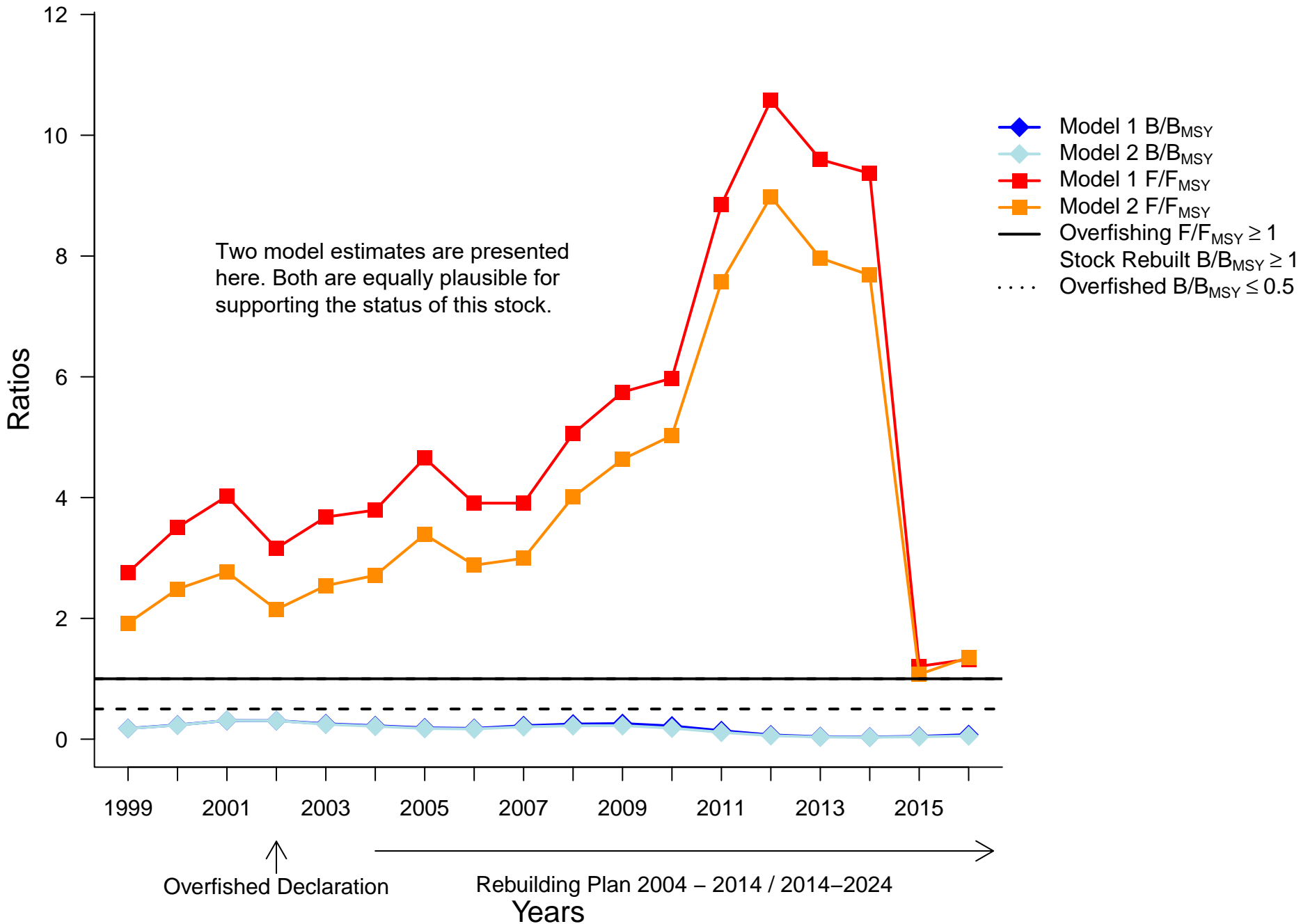


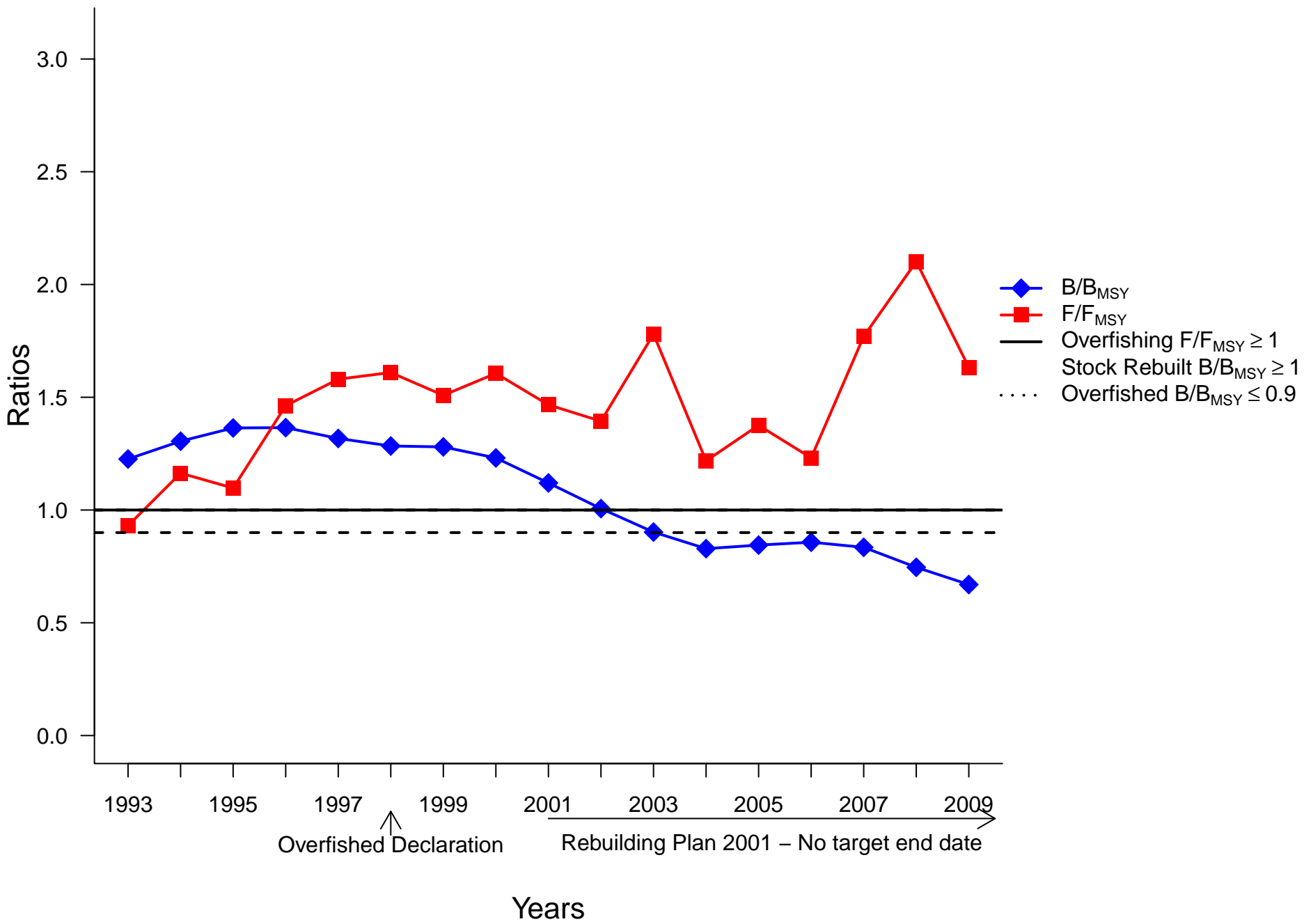
Atlantic cod – Georges Bank



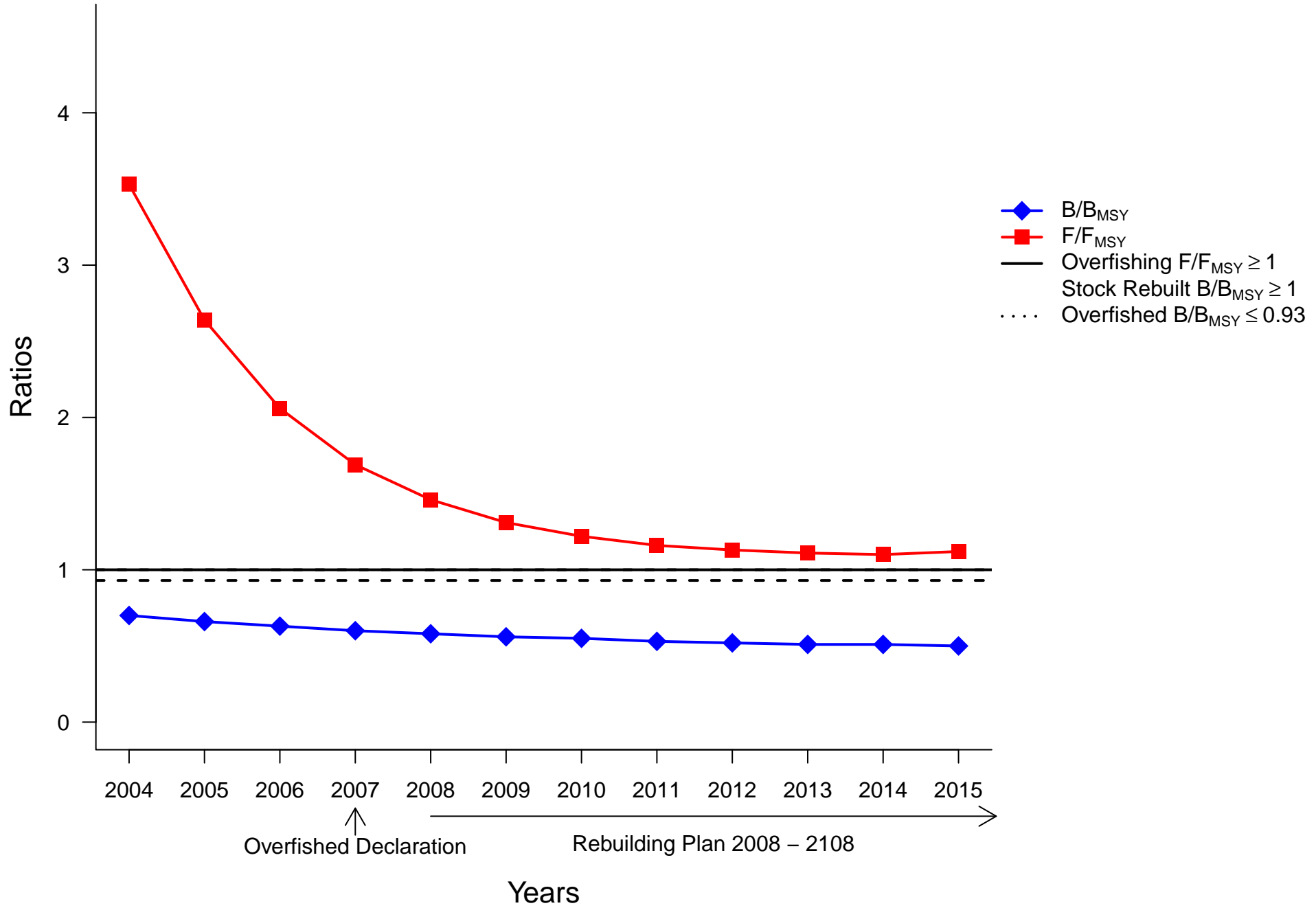
Atlantic Cod – Gulf of Maine



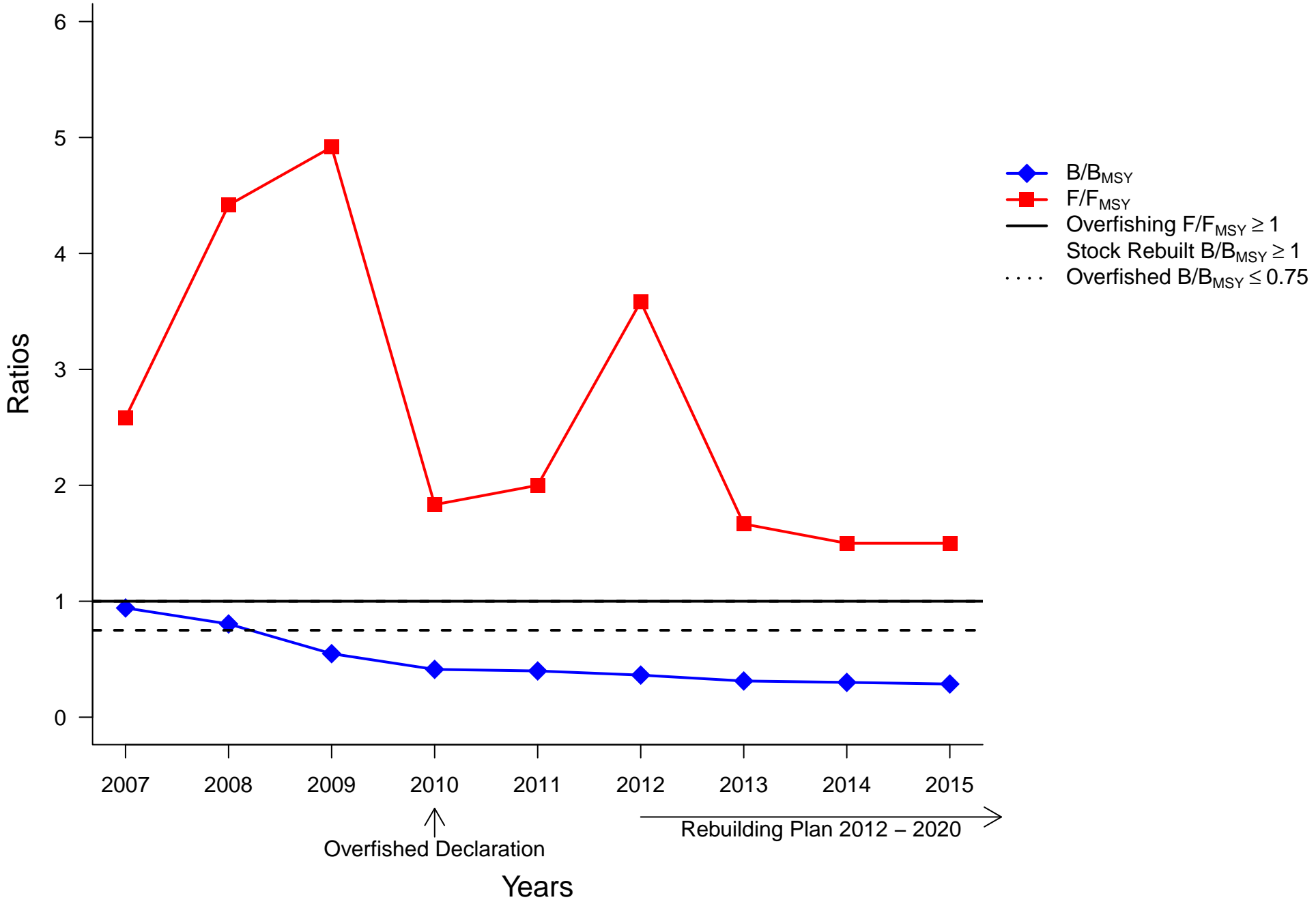
Blue marlin – Atlantic



Dusky shark – Atlantic and Gulf of Mexico

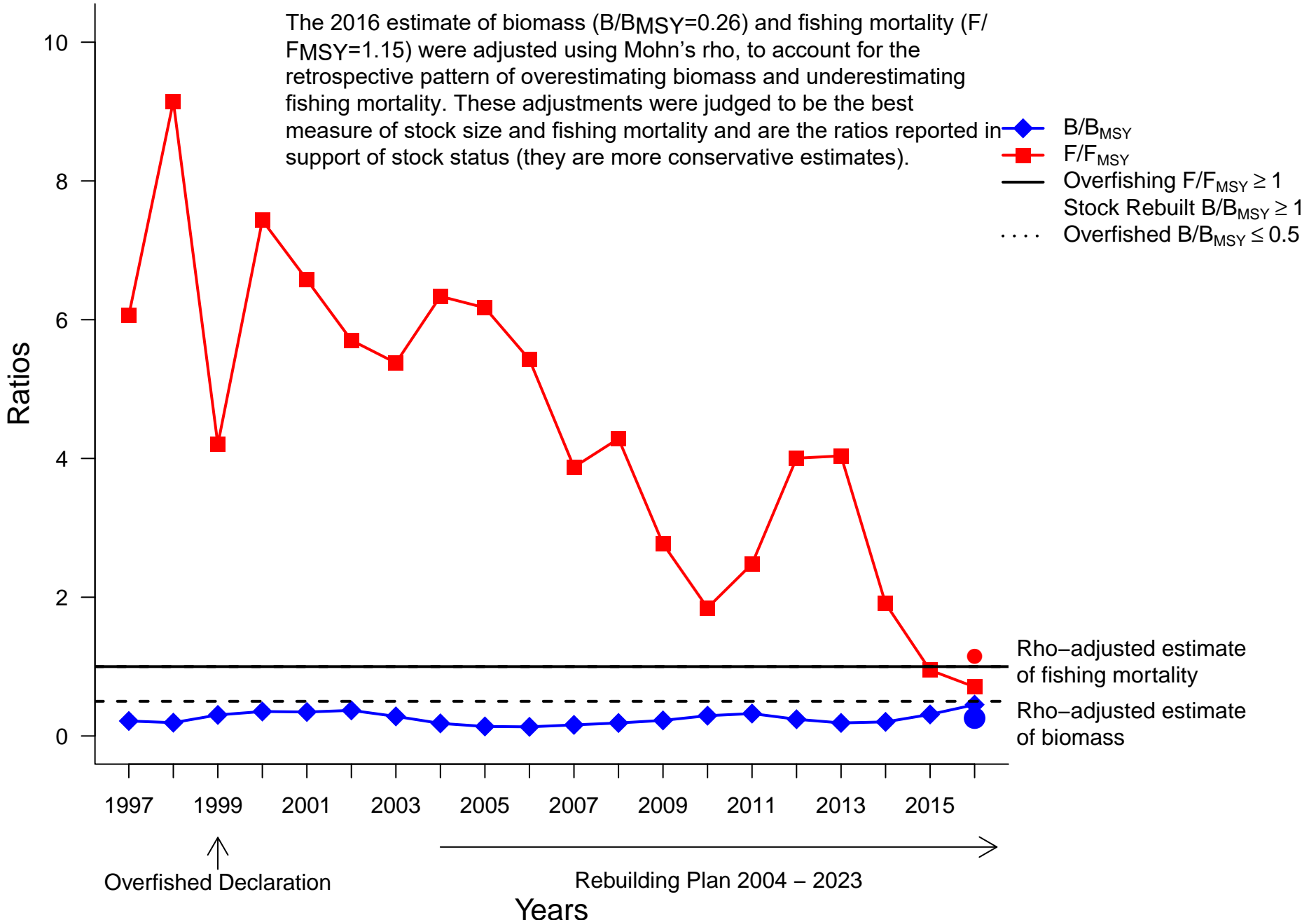


Red grouper – Southern Atlantic Coast



Yellowtail flounder – Cape Cod / Gulf of Maine

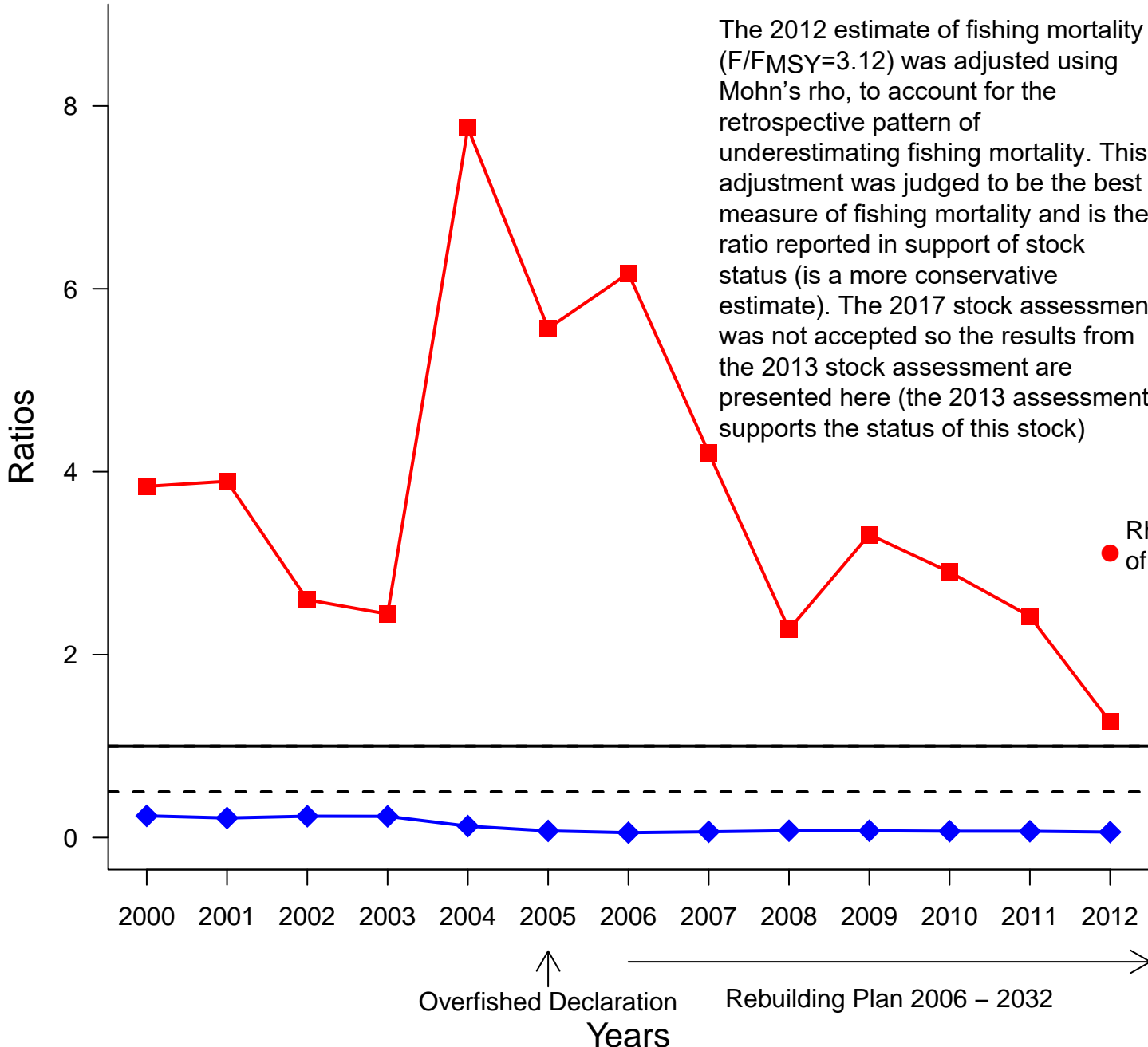
The 2016 estimate of biomass ($B/B_{MSY}=0.26$) and fishing mortality ($F/F_{MSY}=1.15$) were adjusted using Mohn's rho, to account for the retrospective pattern of overestimating biomass and underestimating fishing mortality. These adjustments were judged to be the best measure of stock size and fishing mortality and are the ratios reported in support of stock status (they are more conservative estimates).



Yellowtail flounder – Georges Bank

The 2012 estimate of fishing mortality ($F/F_{MSY}=3.12$) was adjusted using Mohn's rho, to account for the retrospective pattern of underestimating fishing mortality. This adjustment was judged to be the best measure of fishing mortality and is the ratio reported in support of stock status (is a more conservative estimate). The 2017 stock assessment was not accepted so the results from the 2013 stock assessment are presented here (the 2013 assessment supports the status of this stock)

- ◆ B/B_{MSY}
- F/F_{MSY}
- Overfishing $F/F_{MSY} \geq 1$
- Stock Rebuilt $B/B_{MSY} \geq 1$
- ⋯ Overfished $B/B_{MSY} \leq 0.5$



● Rho-adjusted estimate of fishing mortality

↑ Overfished Declaration

→ Rebuilding Plan 2006 – 2032

Years