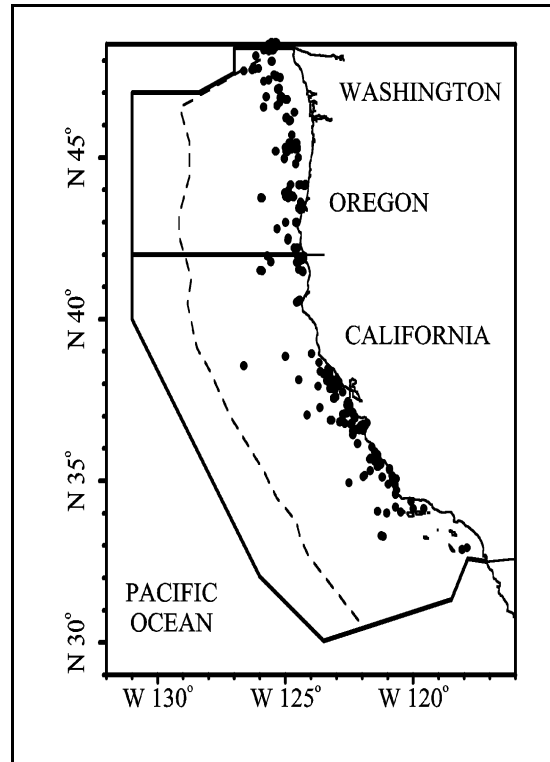


## HUMPBACK WHALE (*Megaptera novaeangliae*): Eastern North Pacific Stock

### STOCK DEFINITION AND GEOGRAPHIC RANGE

Although the International Whaling Commission (IWC) only considered one stock (Donovan 1991), there is now good evidence for multiple populations of humpback whales in the North Pacific (Johnson and Wolman 1984; Baker et al. 1990). Aerial, vessel, and photo-identification surveys, and genetic analyses indicate that within the U.S. EEZ, there are at least three relatively separate populations that migrate between their respective summer/fall feeding areas and winter/spring calving and mating areas (Calambokidis et al. 1997, Baker et al. 1998): 1) winter/spring populations in coastal Central America and Mexico which migrate to the coast of California to southern British Columbia in summer/fall (Steiger et al. 1991, Calambokidis et al. 1993) - referred to as the eastern North Pacific stock (Figure 1); 2) winter/spring populations of the Hawaiian Islands which migrate to northern British Columbia/Southeast Alaska and Prince William Sound west to Kodiak (Baker et al. 1990, Perry et al. 1990, Calambokidis et al. 1997) - referred to as the central North Pacific stock; and 3) winter/spring populations of Japan which, based on Discovery Tag information, probably migrate to waters west of the Kodiak Archipelago (the Bering Sea and Aleutian Islands) in summer/fall (Berzin and Rovnin 1966, Nishiwaki 1966, Darling 1991) - referred to as the western North Pacific stock. Winter/spring populations of humpback whales also occur in Mexico's offshore islands; the migratory destination of these whales is not well known (Calambokidis et al. 1993, Calambokidis et al. 1997), but Norris et al. (1999) speculate that they may travel to the Bering Sea or Aleutian Islands. Significant levels of genetic differences were found between the California and Alaska feeding groups based on analyses of mitochondrial DNA (Baker et al. 1990) and nuclear DNA (Baker et al. 1993). The genetic exchange rate between California and Alaska is estimated to be less than 1 female per generation (Baker 1992). Two breeding areas (Hawaii and coastal Mexico) showed fewer genetic differences than did the two feeding areas (Baker 1992). This is substantiated by the observed movement of individually-identified whales between Hawaii and Mexico (Baker et al. 1990). There have been no individual matches between 597 humpbacks photographed in California and 617 humpbacks photographed in Alaska (Calambokidis et al. 1996). Only two of the 81 whales photographed in British Columbia have matched with a California catalog (Calambokidis et al. 1996), indicating that the U.S./Canada border is an approximate geographic boundary between feeding populations.

Until further information becomes available, three management units of humpback whales (as described above) are recognized within the U.S. EEZ of the North Pacific: the eastern North Pacific stock (this report), the central North Pacific stock, and the western North Pacific stock. The central and western North Pacific stocks are reported separately in the Stock Assessment Reports for the Alaska Region.

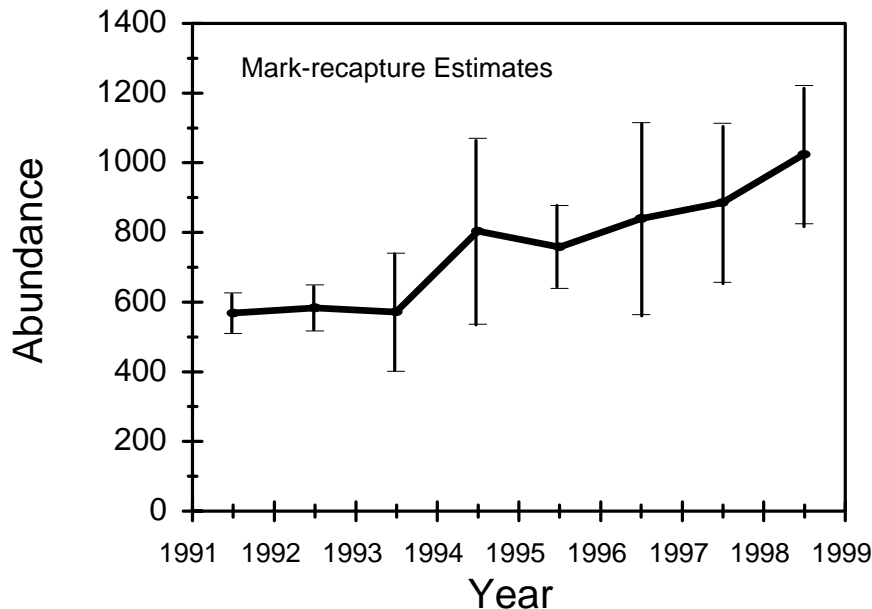


**Figure 2.** Humpback whale sighting locations based on aerial and shipboard surveys off California, Oregon, and Washington, 1989-96. Dashed line represents the U.S. EEZ, thick line indicates the outer boundary of all surveys combined. Greater effort was conducted off California (south of 42°N) and in the inshore half of the U.S. EEZ. See Appendix 2 for data sources and information on timing and location of survey effort.

## POPULATION SIZE

Based on whaling statistics, the pre-1905 population of humpback whales in the North Pacific was estimated to be 15,000 (Rice 1978), but this population was reduced by whaling to approximately 1,200 by 1966 (Johnson and Wolman 1984). The North Pacific total now almost certainly exceeds 6,000 humpback whales (Calambokidis et al. 1997). Dohl et al. (1983) first estimated the central California feeding population to be 338 (CV=0.29) based on aerial surveys in August through November of 1980-83; however, this estimate does not include a correction for submerged animals. More recently, the size of the "California" feeding stock of humpback whales has been estimated by three independent methods. 1) Calambokidis et al. (2000) estimated the number of humpback whales in California-Washington to be 1,024 (CV=0.10) based on mark-recapture estimates comparing their 1998 and 1999 photo-identification catalogs. 2) Barlow and Taylor (2001) estimates 1,177 (CV=0.28) humpbacks in California, Oregon and Washington waters based on ship line-transect surveys in summer/autumn of 1993 and 1996. 3) Forney et al. (1995) estimate 319 (CV=0.41) humpback whales in California coastal waters based on aerial line-transect surveys in winter/spring of 1991 and 1992 (not corrected for diving whales). Green et al. (1992) report that humpback whales were the second most abundant large whale (after the gray whale) in aerial surveys off Oregon and Washington, but they did not estimate population size. Based on photographic mark-recapture techniques, Urban et al. (1999) estimate that the 1987-92 population of humpback whales was 1,162 in coastal Mexico and 642 near the Revillagigedos Islands.

The best estimate of abundance for the eastern North Pacific stock of humpback whales is the photographic mark-recapture estimate of 1,024 (CV=0.10) whales along the U.S. west coast (Calambokidis et al. 2000). In general, mark-recapture estimates are negatively biased due to heterogeneity in sighting probabilities (Hammond 1986); however, this bias is likely to be minimal because the above mark-recapture estimate is based on data from over half of the entire population (the 1998-99 catalog contained 594 known individuals). The photographic mark-recapture estimates from Mexico (Urban et al. 1999) include whales from several feeding destinations and probably two different stocks. The aerial line-transect estimates (Forney et al. 1995) are more than 8 years old and do not include corrections for diving whales that would be missed. The ship line transect estimate (Barlow and Taylor 2001) is less precise than



**Figure 3.** Mark-recapture estimates of the abundance of humpback whales feeding off California, Oregon, and Washington based on photo-identification studies (Calambokidis et al. 2000).

the mark-recapture estimates and is negatively biased because it does not include some humpback whales which could not be identified in the field and which were recorded as “unidentified large whale”.

### **Minimum Population Estimate**

The minimum population estimate for humpback whales in the California/Mexico stock is taken as the lower 20th percentile of the log-normal distribution of 1998-99 abundance estimated from mark-recapture methods (Calambokidis et al. 1999) or approximately 944.

### **Current Population Trend**

Ship surveys provide some indication that humpback whales increased in abundance in California coastal waters between 1979/80 and 1991 (Barlow 1994) and between 1991 and 1996 (Barlow 1997). Mark-recapture population estimates increased steadily from 1988/90 to 1997-98 at about 8% per year (Calambokidis et al. 1999) and the estimate for 1998-99 is again higher than previous estimates (Calambokidis et al. 2000). Population estimates for the entire North Pacific have also increased substantially from 1,200 in 1966 to 6,000-8,000 circa 1992. Although these estimates are based on different methods and the earlier estimate is extremely uncertain, the growth rate implied by these estimates (6-7%) is consistent with the recently observed growth rate of the eastern North Pacific stock.

### **CURRENT AND MAXIMUM NET PRODUCTIVITY RATES**

The proportion of calves in the California/Mexico stock from 1986 to 1994 appeared much lower than previously measured for humpback whales in other areas (Calambokidis and Steiger 1994), but in 1995-97 a greater proportion of calves were identified, and the 1997 reproductive rates for this population are closer to those reported for humpback whale populations in other regions (Calambokidis et al. 1998). Despite the apparently low proportion of calves, two independent lines of evidence indicate that this stock appears to be growing (Barlow 1994; Calambokidis et al. 2000) with a best estimate of 8% growth per year (Calambokidis et al. 1999).

### **POTENTIAL BIOLOGICAL REMOVAL**

The potential biological removal (PBR) level for this stock is calculated as the minimum population size (944) times one half the estimated population growth rate for this stock of humpback whales (½ of 8%) times a recovery factor of 0.1 (for an endangered species), resulting in a PBR of 3.8. Because this stock spends approximately half its time outside the U.S. EEZ, the PBR allocation for U.S. waters is 1.9 whales per year.

### **HUMAN-CAUSED MORTALITY**

#### **Historic Whaling**

The reported take of North Pacific humpback whales by commercial whalers totaled approximately 7,700 between 1947 and 1987 (C. Allison, pers. comm.). In addition, approximately 7,300 were taken along the west coast of North America from 1919 to 1929 (Tonnessen and Johnsen 1982). Total 1910-1965 catches from the California-Washington stock includes at least the 2,000 taken in Oregon and Washington, the 3,400 taken in California, and the 2,800 taken in Baja California (Rice 1978). Shore-based whaling apparently depleted the humpback whale stock off California twice: once prior to 1925 (Clapham et al. 1997) and again between 1956 and 1965 (Rice 1974). There has been a prohibition on taking humpback whales since 1966.

#### **Fishery Information**

A 1995-99 summary of known fishery mortality and injury for this stock of humpback whales is given in Table 1. Detailed information on these fisheries is provided in Appendix 1. After the 1997 implementation of a Take Reduction Plan, which included skipper education workshops and required the use of pingers and minimum 6-fathom extenders, overall cetacean entanglement rates in the drift gillnet fishery dropped considerably (Barlow and Cameron 1999). Because of the changes in this fishery after implementation of the Take Reduction Plan, mean annual takes for this fishery (Table 1) are based only on 1997-99 data. This results in an average estimate of zero humpback whales taken annually. Some gillnet mortality of large whales may go unobserved because whales swim away with a portion of the net. The deaths of two humpback whales that stranded in the Southern California Bight have been attributed to entanglement in fishing gear (Heyning and Lewis 1990), and a humpback whale was observed off Ventura, CA in 1993 with a 20 ft section of netting wrapped around and trailing behind. During the period 1995-99, a humpback cow-calf

pair was seen entangled in a net off Big Sur, California (1999), but the fate of these animals is not known (J. Cordero, NMFS SW Region, pers. comm.). Other unobserved fisheries may also result in injuries or deaths of humpback whales. In 1997, one humpback whale was snagged by a central California salmon troller, and the animal swam away with the hook and many feet of trailing monofilament (NMFS, Southwest Region, unpublished data); this type of injury is not likely to be serious.

**Table 1.** Summary of available information on the incidental mortality and injury of humpback whales (eastern North Pacific stock) for commercial fisheries that might take this species (Julian 1997, Julian and Beeson 1998, Cameron and Forney 1999, 2000). Injury includes any entanglement that does not result in immediate death and may include serious injury resulting in death. n/a indicates that data are not available. Mean annual takes are based on 1995-99 data unless noted otherwise.

Fishery Name	Year(s)	Data Type	Percent Observer Coverage	Observed Mortality (and Injury)	Estimated Mortality (CV in parentheses)	Mean Annual Takes (CV in parentheses)
<b>CA/OR thresher shark/swordfish drift gillnet fishery</b>	1995	observer data	15.6%	0	Mortality 0,0,0,0,0 Injury 0,0,0,0,0	Mortality 0 Injury 0 <sup>1</sup>
	1996		12.4%	0		
	1997		23.0%	0		
	1998		20.0%	0		
	1999		20.0%	0		
<b>CA angel shark/halibut and other species large mesh (&gt;3.5") set gillnet fishery</b>	1990-94	observer data	10-15%	0,0,0,0,0	0,0,0,0,0	n/a
<b>CA salmon troll fishery</b>	1997	incidental report	0%	(1)	n/a	Injury >0.2 (n/a)
<b>Total annual takes</b>						>0.2

<sup>1</sup> Only 1997-99 mortality estimates are included in the average because of gear modifications implemented within the fishery as part of a 1997 Take Reduction Plan. Gear modifications included the use of net extenders and acoustic warning devices (pingers).

Drift gillnet fisheries for swordfish and sharks exist along the entire Pacific coast of Baja California and may take animals from the same population. Quantitative data are available only for the Mexican swordfish drift gillnet fishery, which uses vessels, gear, and operational procedures similar to those in the U.S. drift gillnet fishery, although nets may be up to 4.5 km long (Holts and Sosa-Nishizaki 1998). The fleet increased from two vessels in 1986 to 31 vessels in 1993 (Holts and Sosa-Nishizaki 1998). The total number of sets in this fishery in 1992 can be estimated from data provided by these authors to be approximately 2,700, with an observed rate of marine mammal bycatch of 0.13 animals per set (10 marine mammals in 77 observed sets; Sosa-Nishizaki et al. 1993). This overall mortality rate is similar to that observed in California driftnet fisheries during 1990-95 (0.14 marine mammals per set; Julian and Beeson 1998), but species-specific information is not available for the Mexican fisheries. There are currently efforts underway to convert the Mexican swordfish driftnet fishery to a longline fishery (D. Holts, pers. comm.).

### Ship Strikes

Ship strikes were implicated in the deaths of at least two humpback whales in 1993 and one humpback whale in 1995, and one unidentified whale, which may have been a humpback whale, was struck and injured by a small boat in 1997 (J. Cordaro, pers. comm.). Additional mortality from ship strikes probably goes unreported because the whales do not strand or, if they do, they do not have obvious signs of trauma. Several humpback whales have been photographed in California with large gashes in their dorsal surface that appear to be from ship strikes (J. Calambokidis, pers. comm.). The average number of humpback whale deaths by ship strikes for 1995-99 is at least 0.2 per year.

### STATUS OF STOCK

Humpback whales in the North Pacific were estimated to have been reduced to 13% of carrying capacity (K) by commercial whaling (Braham 1991). Clearly the North Pacific population was severely depleted. The initial abundance has never been estimated separately for the eastern North Pacific stock, but this stock was also depleted (probably twice) by whaling (Rice 1974; Clapham et al. 1997). Humpback whales are formally listed as "endangered" under the Endangered Species Act (ESA), and consequently the California/Mexico stock is automatically considered

as a "depleted" and "strategic" stock under the MMPA. The estimated annual mortality and injury due to entanglement (0.2/yr) plus ship strikes (0.2/yr) in California is less than the PBR allocation of 1.9 for U.S. waters. In a review of the severity of injury to the humpback whale entangled in 1997, the Pacific Scientific Review Group determined that it this animal was not seriously injured. Based on strandings and gillnet observations, annual humpback whale mortality and serious injury in California's drift gillnet fishery is probably greater than 10% of the PBR; therefore, total fishery mortality may not be approaching zero mortality and serious injury rate. The eastern North Pacific stock appears to be increasing in abundance. The increasing levels of anthropogenic noise in the world's oceans, such as those produced by ATOC (Acoustic Thermometry of Ocean Climate) or LFA (Low Frequency Active) Sonar, have been suggested to be a habitat concern for whales, particularly for baleen whales that may communicate using low-frequency sound.

## REFERENCES

- Allison, C. International Whaling Commission. The Red House, 135 Station Road, Impington, Cambridge, UK CB4 9NP.
- Baker, C. S. 1992. Genetic variability and stock identity of humpback whales, world-wide. Final Contract Report to Int. Whal. Commn. 45pp.
- Baker, C. S., D. A. Gilbert, M. T. Weinrich, R. Lambertsen, J. Calambokidis, B. McArdle, G. K. Chambers, and S. J. O'Brien. 1993. Population characteristics of DNA fingerprints in humpback whales (*Megaptera novaeangliae*). *J. Heredity* 84:281-290.
- Baker, C. S., L. Medrano-Gonzalez, J. Calambokidis, A. Perry, F. Pichler, H. Rosenbaum, J. M. Straley, J. Urban-Ramirez, M. Yamaguchi, and O. von Ziegesar. 1998. Population structure of nuclear and mitochondrial DNA variation among humpback whales in the North Pacific. *Mol. Ecol.* 7:695-708.
- Baker, C. S., S. R. Palumbi, R. H. Lambertsen, M. T. Weinrich, J. Calambokidis, and S. J. O'Brien. 1990. Influence of seasonal migration on geographic distribution of mitochondrial DNA haplotypes in humpback whales. *Nature* 344(15):238-240.
- Barlow, J. 1994. Abundance of large whales in California coastal waters: a comparison of ship surveys in 1979/80 and in 1991. *Rept. Int. Whal. Commn.* 44:399-406.
- Barlow, J. 1995. The abundance of cetaceans in California waters. Part I: Ship surveys in summer and fall of 1991. *Fish. Bull.* 93:1-14.
- Barlow, J. 1997. Preliminary estimates of cetacean abundance off California, Oregon and Washington based on a 1996 ship survey and comparisons of passing and closing modes. Administrative Report LJ-97-11, Southwest Fisheries Science Center, National Marine Fisheries Service, P.O. Box 271, La Jolla, CA 92038. 25p.
- Barlow, J., R. W. Baird, J. E. Heyning, K. Wynne, A. M. Manville, II, L. F. Lowry, D. Hanan, J. Sease, and V. N. Burkanov. 1994. A review of cetacean and pinniped mortality in coastal fisheries along the west coast of the U.S. and Canada and the east coast of the Russian Federation. *Rep. Int. Whal. Commn, Special Issue* 15:405-425.
- Barlow, J. and G. A. Cameron. 1999. Field experiments show that acoustic pingers reduce marine mammal bycatch in the California drift gillnet fishery. Report SC/51/SM2 to the Scientific Committee of the International Whaling Commission, May 1999. 20pp.
- Barlow, J., K. A. Forney, P. S. Hill, R. L. Brownell, Jr., J. V. Carretta, D. P. DeMaster, F. Julian, M. S. Lowry, T. Ragen, and R. R. Reeves. 1997. U.S. Pacific Marine Mammal Stock Assessments: 1996. U.S. Dep. Commer., NOAA Tech. Memo. NMFS-SWFSC-248. 223p.
- Barlow, J. and T. Gerrodette. 1996. Abundance of cetaceans in California waters based on 1991 and 1993 ship surveys. U.S. Dep. Commer., NOAA Tech. Memo. NMFS-SWFSC-233. 15p.
- Barlow, J. and B. L. Taylor. 2001. Estimates of large whale abundance off California, Oregon, Washington, and Baja California based on 1993 and 1996 ship surveys. Administrative Report LJ-01-03 available from Southwest Fisheries Science Center, National Marine Fisheries Service, P.O. Box 271, La Jolla, CA 92038. 12p.
- Berzin, A. A., and A. A. Rovnin. 1966. The distribution and migrations of whales in the northeastern part of the Pacific, Chukchi and Bering Seas. *Izvestiya Tikhookeanskogo Nauchno-Issledovatel'skogo Institut Rybnogo Khozyaistva I Okeanografii* 58:179-207. (Translated by Bureau of Commercial Fisheries, U. S. Fish and Wildlife Service, Seattle, 1968, pp. 103-136 *In*: K. I. Panin (ed.), *Soviet Research on Marine Mammals of the Far East*).
- Best, P. B. 1993. Increase rates in severely depleted stocks of baleen whales. *ICES J. Mar. Sci.* 50:169-186.

- Braham, H. W. 1991. Endangered whales: status update. A Report on the 5-year status of stocks review under the 1978 amendments to the U.S. Endangered Species Act. NMFS Unpublished Report.
- Calambokidis, J., T. Chandler, K. Rasmussen, G. H. Steiger, and L. Schlender. 1999. Humpback and blue whale photo-identification research off California, Oregon and Washington in 1998. Final Contract Report to Southwest Fisheries Science Center, National Marine Fisheries Service, P.O. Box 271, La Jolla, CA 92038. 35 pp.
- Calambokidis, J., T. Chandler, K. Rasmussen, L. Schlender, and G. H. Steiger. 2000. Humpback and blue whale photo-identification research off California, Oregon and Washington in 1999. Final Contract Report to Southwest Fisheries Science Center, National Marine Fisheries Service, P.O. Box 271, La Jolla, CA 92038.
- Calambokidis, J., and G. H. Steiger. 1994. Population assessment of humpback and blue whales using photo-identification from 1993 surveys off California. Final Contract Report to Southwest Fisheries Science Center, P.O. Box 271, La Jolla, CA 92038. 31pp.
- Calambokidis, J., G. H. Steiger, and J. R. Evenson. 1993. Photographic identification and abundance estimates of humpback and blue whales off California in 1991-92. Final Contract Report 50ABNF100137 to Southwest Fisheries Science Center, P.O. Box 271, La Jolla, CA 92038. 67pp.
- Calambokidis, J., G. H. Steiger, J. R. Evenson, K. R. Flynn, K. C. Balcomb, D. E. Claridge, P. Bloedel, J. M. Straley, C. S. Baker, O. von Ziegesar, M. E. Dahlheim, J. M. Waite, J. D. Darling, G. Ellis, and G. A. Green. 1996. Interchange and isolation of humpback whales in California and other North Pacific feeding grounds. *Mar. Mamm. Sci.* 12(2):215-226.
- Calambokidis, J., G. H. Steiger, J. M. Straley, T. J. Quinn, II, L. M. Herman, S. Cerchio, D. R. Salden, M. Yamaguchi, F. Sato, J. Urbán R., J. Jacobsen, O. von Ziegesar, K. C. Balcomb, C. M. Gabriele, M. E. Dahlheim, N. Higashi, S. Uchida, J. K. B. Ford, Y. Miyamura, P. Ladrón de Guevara P., S. A. Mizroch, L. Schlender and K. Rasmussen. 1997. Abundance and population structure of humpback whales in the North Pacific Basin. Final Contract Report 50ABNF500113 to Southwest Fisheries Science Center, P.O. Box 271, La Jolla, CA 92038. 72p.
- Cameron, G. A. and K. A. Forney. 1999. Preliminary estimates of cetacean mortality in the California gillnet fisheries for 1997 and 1998. Paper SC/51/O4 presented to the International Whaling Commission, May 1999 (unpublished). 14 pp.
- Cameron, G.A. and K.A. Forney. 2000. Preliminary estimates of cetacean mortality in the California/Oregon gillnet fisheries for 1999. Paper SC/52/O24 presented to the International Whaling Commission, June 2000 (unpublished). 12 pp.
- Clapham, P. J., S. Leatherwood, I. Szczepaniak, and R. L. Brownell, Jr. 1997. Catches of humpback and other whales from shore stations at Moss Landing and Trinidad, California, 1919-1926. *Marine Mammal Science* 13(3):368-394.
- Cordaro, J. Southwest Region, NMFS, 501 West Ocean Blvd, Long Beach, CA 90802-4213.
- Darling, J. D. 1991. Humpback whales in Japanese waters. Ogasawara and Okinawa. Fluke identification catalog 1987-1990. Final Contract Report, World Wildlife Fund for Nature, Japan. 22 pp.
- Dizon, A. E., C. Lockyer, W. F. Perrin, D. P. DeMaster, and J. Sisson. 1992. Rethinking the stock concept: a phylogeographic approach. *Conserv. Biol.* 6:24-36.
- Dohl, T. P., R. C. Guess, M. L. Duman, and R. C. Helm. 1983. Cetaceans of central and northern California, 1980-83: Status, abundance, and distribution. Final Report to the Minerals Management Service, Contract No. 14-12-0001-29090. 284p.
- Donovan, G. P. 1991. A review of IWC stock boundaries. *Rept. Int. Whal. Commn., Special Issue* 13:39-68.
- Forney, K. A., J. Barlow, and J. V. Carretta. 1995. The abundance of cetaceans in California waters. Part II: Aerial surveys in winter and spring of 1991 and 1992. *Fish. Bull.* 93:15-26.
- Green, G. A., J. J. Brueggeman, R. A. Grotefendt, C. E. Bowlby, M. L. Bonnell, K. C. Balcomb, III. 1992. Cetacean distribution and abundance off Oregon and Washington, 1989-1990. Ch. 1 In: J. J. Brueggeman (ed.). Oregon and Washington Marine Mammal and Seabird Surveys. Minerals Management Service Contract Report 14-12-0001-30426.
- Hammond, P. S. 1986. Estimating the size of naturally marked whale populations using capture-recapture techniques. *Rept. Int. Whal. Commn., Special Issue* 8:253-282.
- Hanan, D. A. 1986. California Department of Fish and Game coastal marine mammal study, annual report for the

- period July 1, 1983 - June 30, 1984. Admin. Rept. LJ-86-16 available from Southwest Fisheries Science Center, P.O. Box 271, La Jolla, CA. 55pp.
- Hanan, D. A., D. B. Holts, and A. L. Coan, Jr. 1993. The California drift gill net fishery for sharks and swordfish, 1981-82 through 1990-91. Calif. Dept. Fish and Game Fish. Bull. No. 175. 95pp.
- Heyning, J. E., and T. D. Lewis. 1990. Fisheries interactions involving baleen whales off southern California. Rep. int. Whal. Commn. 40:427-431.
- Holts, D. Southwest Fisheries Science Center, National Marine Fisheries Service, P.O. Box 271, La Jolla, CA 92038.
- Holts, D. and O. Sosa-Nishizaki. 1998. Swordfish, *Xiphias gladius*, fisheries of the eastern North Pacific Ocean. In: I. Barrett, O. Sosa-Nishizaki and N. Bartoo (eds.). Biology and fisheries of swordfish, *Xiphias gladius*. Papers from the International Symposium on Pacific Swordfish, Ensenada Mexico, 11-14 December 1994. U.S. Dep. Commer., NOAA Tech. Rep. NMFS 142, 276 p.
- Johnson, J. H., and A. A. Wolman. 1984. The humpback whale, Megaptera novaeangliae. Mar. Fish. Rev. 46(4):30-37.
- Julian, F. 1997. Cetacean mortality in California gill net fisheries: Preliminary estimates for 1996. Paper SC/49/SM02 presented to the International Whaling Commission, September 1997 (unpublished). 13 pp.
- Julian, F. and M. Beeson. 1998. Estimates of marine mammal, turtle, and seabird mortality for two California gillnet fisheries: 1990-95. Fishery Bulletin 96:271-284.
- Nishiwaki, M. 1966. Distribution and migration of the larger cetaceans in the North Pacific as shown by Japanese whaling results. Pp. 172-191 In: K. S. Norris (ed.), Whales, Dolphins and Porpoises. University of California Press, Berkeley, CA. Academic Press, New York.
- Norris, T. F., M. McDonald, and J. Barlow. 1999. Acoustic detections of singing humpback whales (Megaptera novaeangliae) in the eastern North Pacific during their northbound migration. J. Acoust. Soc. Am. 106(1):506-514.
- Perry, A., C. S. Baker, L. M. Herman. 1990. Population characteristics of individually identified humpback whales in the central and eastern North Pacific: a summary and critique. Rep. Int. Whal. Commn. (Special Issue 12):307-317.
- Rice, D. W. 1974. Whales and whale research in the eastern North Pacific. pp. 170-195 In: W. E. Schevill (ed.). The Whale Problem: A Status Report. Harvard Press, Cambridge, MA.
- Rice, D. W. 1978. The humpback whale in the North Pacific: distribution, exploitation, and numbers. pp. 29-44 In: K. S. Norris and R. R. Reeves (eds.). Report on a Workshop on Problems Related to Humpback Whales (Megaptera novaeangliae) in Hawaii. Contr. Rept. to U. S. Marine Mammal Commn. NTIS PB-280-794. 90pp.
- Sosa-Nishizaki, O., R. De la Rosa Pacheco, R. Castro Longoria, M. Grijalva Chon, and J. De la Rosa Velez. 1993. Estudio biologico pesquero del pez (*Xiphias gladius*) y otras especies de picudos (marlins y pez vela). Rep. Int. CICESE, CTECT9306.
- Steiger, G. H., J. Calambokidis, R. Sears, K. C. Balcomb, and J. C. Cubbage. 1991. Movement of humpback whales between California and Costa Rica. Mar. Mamm. Sci. 7:306-310.
- Tonnessen, J. N., and A. O. Johnsen. 1982. The History of Modern Whaling. Univ. Calif. Press, Berkeley and Los Angeles. 798pp.7:306-310.
- Urbán R., J., C. Alvarez F., M. Salinas Z., J. Jacobson, K. C. Balcomb III, A. Jaramillo L., P. L. de Guevara P., and A. Aguayo L. 1999. Population size of humpback whale, Megaptera novaeangliae, in waters off the Pacific coast of Mexico.
- Yablokov, A. V. 1994. Validity of whaling data. Nature 367:108.