



NOAA

NATIONAL OCEANIC AND
ATMOSPHERIC ADMINISTRATION
UNITED STATES DEPARTMENT OF COMMERCE



Caribbean Fishery Bulletin

Bringing Fishing News to You

FB18-004

FISHERY BULLETIN ISSUE DATE: January 19, 2018

CONTACT: Sarah Stephenson, 727-824-5305, sarah.stephenson@noaa.gov

Seasonal Prohibition on Fishing for and Possession of Red, Black, Tiger, Yellowfin, and Yellowedge Grouper in U.S. Caribbean Federal Waters and Seasonal Closure of Grammanik Bank off St. Thomas, U.S. Virgin Islands

WHAT/WHEN:

Annual Seasonal Grouper Closure

NOAA Fisheries reminds fishermen and the public of the upcoming seasonal closure on fishing for or possession of red, black, tiger, yellowfin, and yellowedge grouper in U.S. Caribbean federal waters.

- This closure begins at 12:01 a.m., local time, on **February 1, 2018**, and extends through **April 30, 2018**.
- This prohibition on possession does not apply to such grouper harvested and landed on shore prior to the closure.

Fishing Prohibitions in Grammanik Bank, U.S. Virgin Islands

NOAA Fisheries reminds fishermen and the public of the upcoming seasonal closure on fishing for or possession of any fish species, except highly migratory species, in the Grammanik Bank area off St. Thomas, U.S. Virgin Islands (Figure 1).

- This closure begins at 12:01 a.m., local time, on **February 1, 2018**, and extends through **April 30, 2018**.
- The term “fish” means finfish, mollusks, crustaceans, and all other forms of marine animal and plant life other than marine mammals and birds.

The Grammanik Bank area is located south of St. Thomas and bounded by the following coordinates:

A	18°11.898' N	64°56.328' W
B	18°11.645' N	64°56.225' W
C	18°11.058' N	64°57.810' W
D	18°11.311' N	64°57.913' W
A	18°11.898' N	64°56.328' W

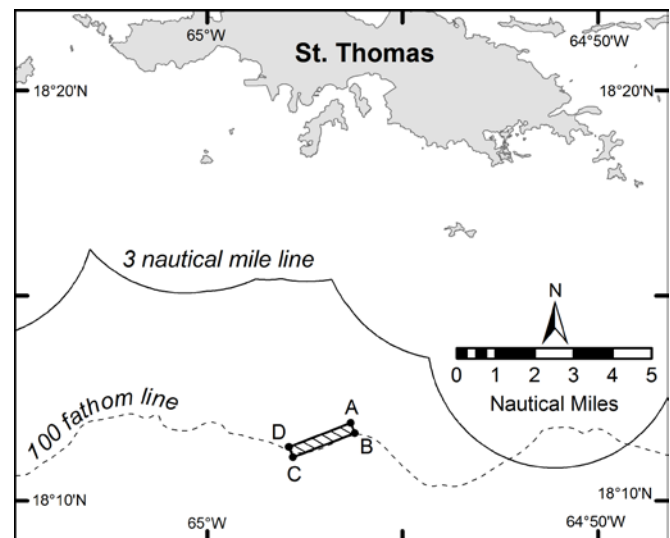


Figure 1. Map showing the Grammanik Bank area (shaded) off St. Thomas, U.S. Virgin Islands.

WHY THESE CLOSURES ARE HAPPENING:

These seasonal closures protect species when they are spawning (reproducing) and therefore more vulnerable to fishing pressure.