




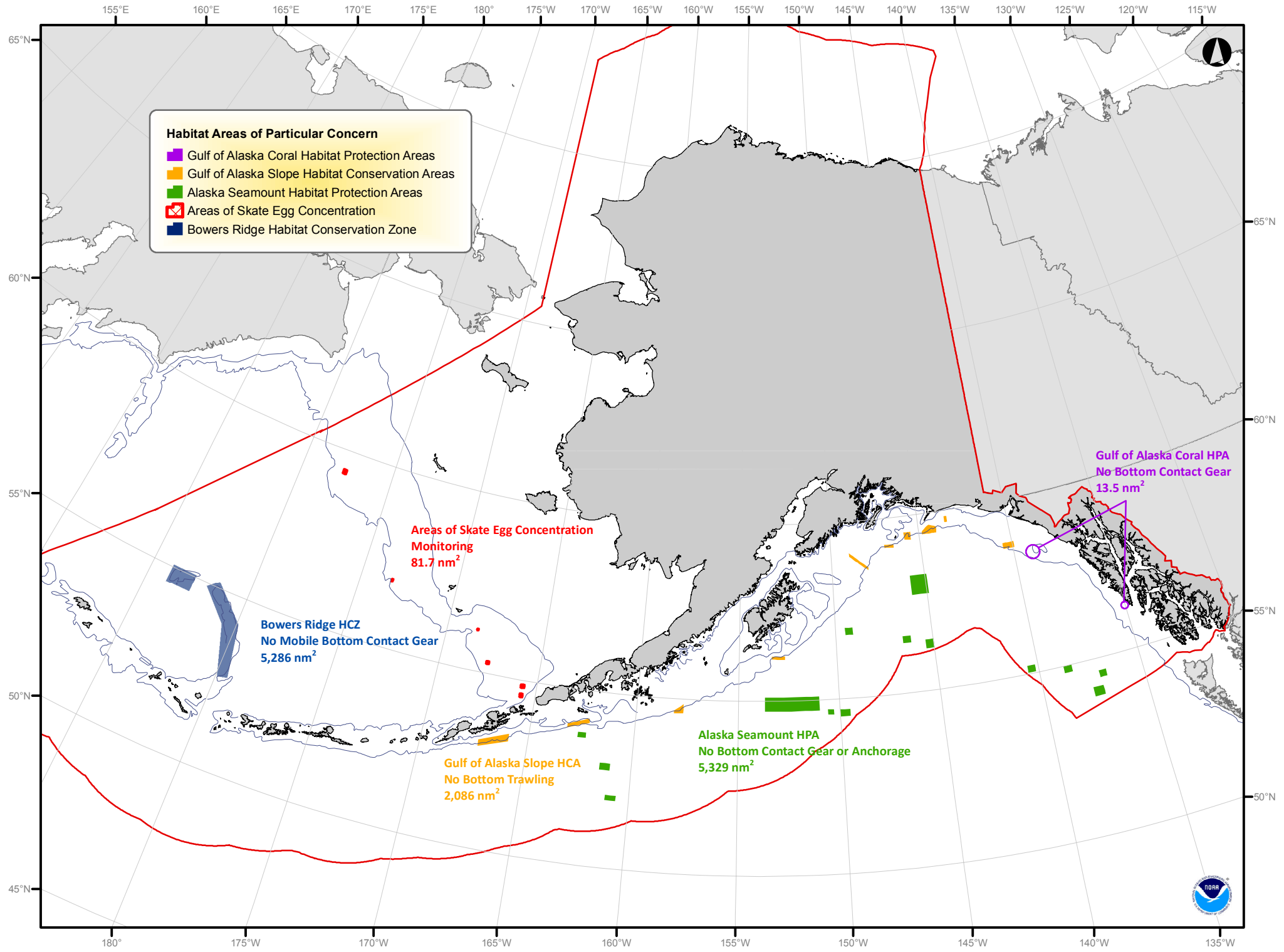


Habitat Areas of Particular Concern

-  Gulf of Alaska Coral Habitat Protection Areas
-  Gulf of Alaska Slope Habitat Conservation Areas
-  Alaska Seamount Habitat Protection Areas
-  Areas of Skate Egg Concentration
-  Bowers Ridge Habitat Conservation Zone



Bowers Ridge HCZ
No Mobile Bottom Contact Gear
5,286 nm²

Areas of Skate Egg Concentration
Monitoring
81.7 nm²

Gulf of Alaska Slope HCA
No Bottom Trawling
2,086 nm²

Alaska Seamount HPA
No Bottom Contact Gear or Anchorage
5,329 nm²

Gulf of Alaska Coral HPA
No Bottom Contact Gear
13.5 nm²



HAPC	Individual HAPC's	Total Area Size	Fishery Management Application	Specific Regulation
Alaska Seamount Habitat Protection Areas	Dickens Seamount Denson Seamount Brown Seamount Welker Seamount Dall Seamount Quinn Seamount Giacomini Seamount Kodiak Seamount Odessey Seamount Patton Seamount Chirikof & Marchand Seamounts Sirius Seamount Derickson Seamount Unimak Seamount Bowers Seamount	5,300 nm ²	No federally permitted vessel may fish with bottom contact gear[i]. 50 CFR 679.22(a)(12)	Federal Register 50 CFR Part 679 Volume 71, No.124 Wednesday, June 28,2006 http://www.fakr.noaa.gov/frules/71fr36694.pdf
Bowers Ridge Habitat Conservation Zone	Bowers Ridge Ulm Plateau	5,330 nm ²	No federally permitted vessel may fish with mobile bottom contact gear [ii]. 50 CFR 679.22(a)(15)	Same as above
Gulf of Alaska Coral Habitat Protection Areas	Cape Ommaney 1 Fairweather FS1 Fairweather FS2 Fairweather FN1 Fairweather FN2	14 nm ²	No federally permitted vessel may fish with bottom contact gear [iii]. 50 CFR 679.22(b)(9)	Same as above
Gulf of Alaska Slope Habitat Conservation Areas	Yakutat Cape Suckling Kayak Island Middleton Island east Middleton Island west Cable Albatross Bank Shumagin Island Sanak Island Unalaska Island	1,892 nm ²	No federally permitted vessel may fish with nonpelagic trawl gear [iv]. 50 CFR 679.22(b)(10)	Same as above
Skate Nursery Areas	Bering 1 Bering 2 Bristol Pribilof Zhemchug Pervenets	81.7 nm ²	Monitoring Priority	Federal Register Vol. 80, No.6 Friday, January 09, 2015 http://alaskafisheries.noaa.gov/frules/80fr1378.pdf

^[i] Bottom contact gear means nonpelagic trawl, dredge, dinglebar, pot, or hook-and-line gear <http://alaskafisheries.noaa.gov/regs/679a2.pdf>.

^[ii] Mobile contact gear means nonpelagic trawl, dredge, or dinglebar gear <http://alaskafisheries.noaa.gov/regs/679a2.pdf>.
^[iii] See footnote i.

^[iv] Nonpelagic trawl means a trawl other than a pelagic trawl. <http://alaskafisheries.noaa.gov/regs/679a2.pdf>